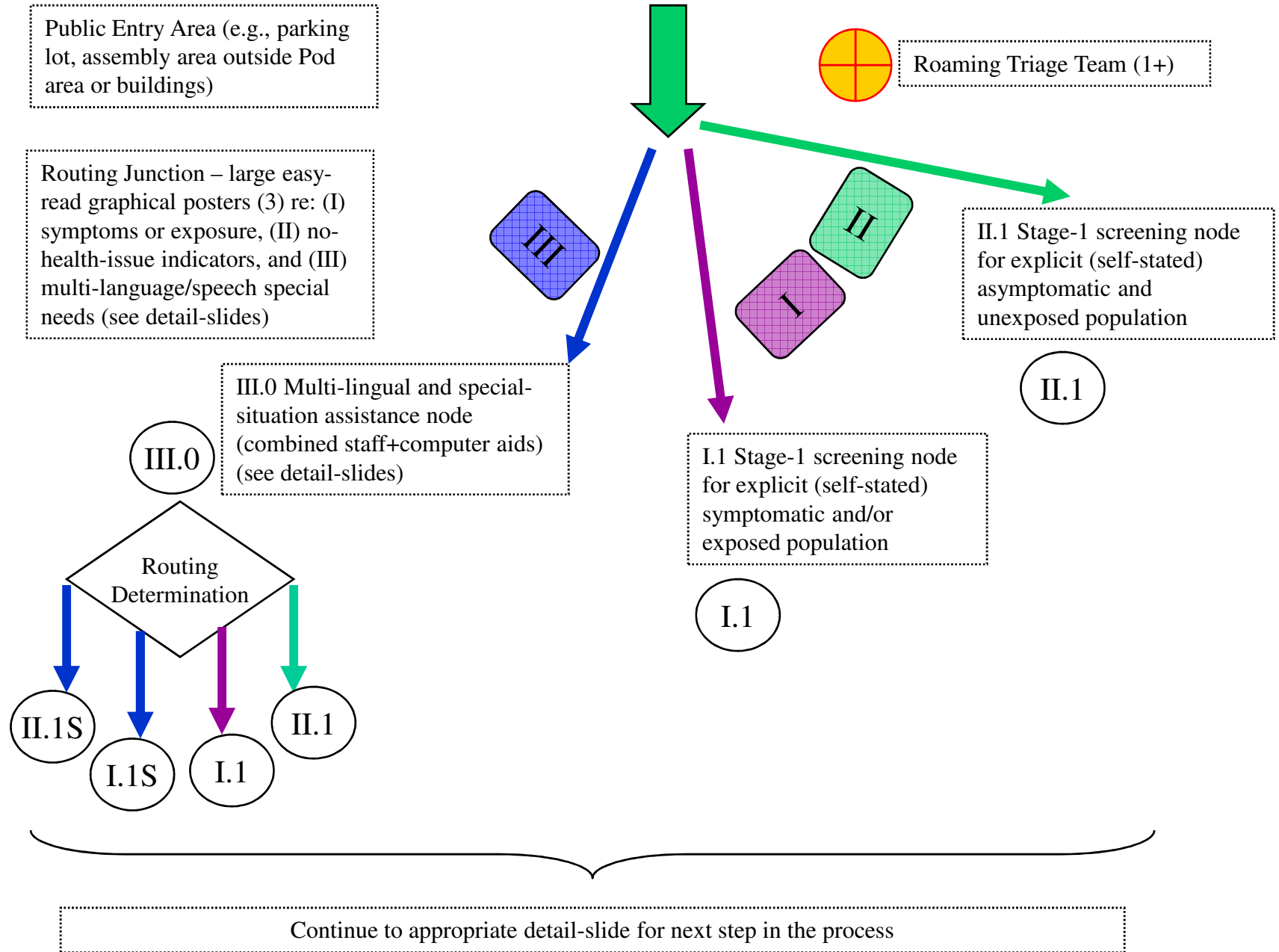


# Suggested Operational Plan for Mass-Population Walk-In CBR Exposure Screening, Aid Dispensing and Treatment Routing

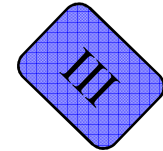
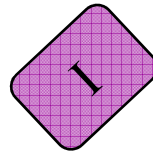
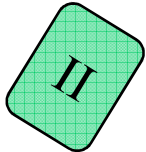
This plan is based upon a synthesis of several models including live simulations and exercises in USA and other countries (Canada, Costa Rica, United Kingdom, Germany, France, Netherlands, Russia, Malaysia and Singapore). It takes into account results of studies during 1995 – 2011 from groups in several agencies and universities including the H1N1 “Race for Resilience” (Pandemic Initiative), including the protocols developed for CRAIDO (Community Rapid-Response for Infectious Disease Outbreaks) and the parent-model, CUBIT (Coordinated Unified Biothreat Intervention and Treatment).

Initial Process – outdoors or in a structure that provides for rapid, non-crowded, contact-minimized movement, with no closed-circulating or non-circulating HVAC system



**POSTER Contents**

This is what people see when they come walking up to the entrance – these are in bright clear simple words and icons



No symptoms of illness?  
No unusual incidents or contacts?  
No experience of exposure?

[clear, simple icon-graphics]

---


→→→→  
Problem with English Language?  
Special Communication Needs?  
→→→→

Feel sick or a change in health?  
Any unusual incidents or contacts?  
Do you think you were exposed?  
Any symptoms like these:

[clear, simple icon-graphics  
with simple text labels]

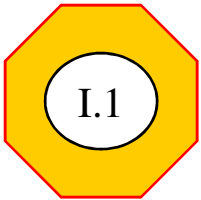
---

→→→→  
Problem with English Language?  
Special Communication Needs?  
→→→→

 **No English?**

AYUDA con Español  
Помощь в Русском  
与中国的帮助  
GIÚP ĐỖ với Việt  
المساعدة في اللغة العربية  
اردو کے ساتھ مدد  
한국어 도움  
Türk Ticaret YARDIMI  
HELP with Other Languages

# Stage-1 Screening and In-line Triage

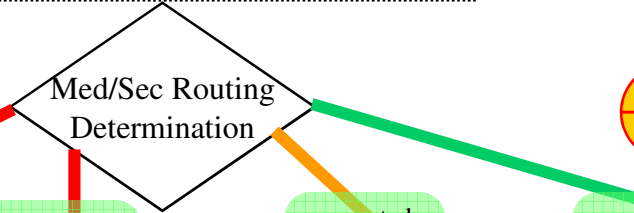


I.1 Stage-1 screening-triage node for explicit (self-stated) symptomatic and/or exposed population

Preferred data acquisition: Use CUBIT/CRAIDO data entry application on iPad or laptop - color-coded (e.g., green=yes, red=no, gray=uncertain) entry of personal/family data, pertinent health and medication data, and relevant geo(zipcode), exposure, incident, contact data (see sample forms).



Screening procedure – verbal and paper or electronic data entry and completion-review



Roaming Triage Team (1+)

Special (Code "S") – Requires special assistance and/or security interview

Level 3 – Requires Medical Consult and Review

Level 2 – Requires Nursing/PA Consult and Review

Level 1 – Requires no special consult or review – proceed to dispensing node

I.2-(1√2√3)



I.2-3

I.2-2

I.2-1

Remark on Code "S" : This can be if a person or family member evidently needs special assistance in understanding and using dispensed medications, performing self-monitored observations, or due to inconsistencies between observed condition and stated condition, or because of evidence that person(s) were exposed to the CBR hazard in a manner that indicates either (a) continued or extended threat to others or (b) conditions, persons, or situational information of interest to hazmat, counterterrorism, intelligence or law enforcement operations.

Continue to appropriate detail-slide for next step in the process



I.1 Stage-1 screening-triage node for explicit (self-stated) symptomatic and/or exposed population

Similar to I.1 but with in-person and/or computer-based language assistance (preferably both). See detail-slide for CUBIT/CRAIDO multi-language assistance protocol.

Screening procedure – verbal and paper or electronic data entry and completion-review

Med/Sec Routing Determination

Roaming Triage Team (1+)

rare

expected

expected

expected

Special (Code “S”) – Requires special assistance and/or security interview

Level 3 – Requires Medical Consult and Review

Level 2 – Requires Nursing/PA Consult and Review

Level 1 – Requires no special consult or review – proceed to dispensing node

I.2-(1√2√3)



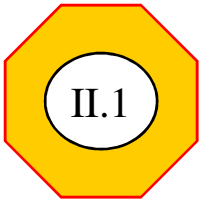
I.2-3

I.2-2

I.2-1

Remark on Code “S” : (see I.1 slide)

Continue to appropriate detail-slide for next step in the process

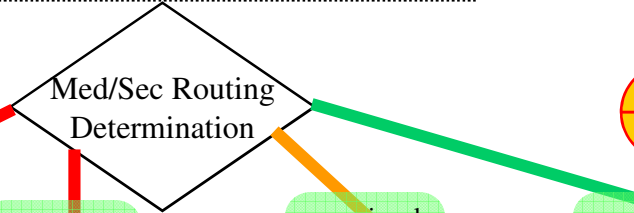


II.1 Stage-1 screening-triage node for explicit (self-stated) asymptomatic and/or unexposed population

Preferred data acquisition: Use CUBIT/CRAIDO data entry application on iPad or laptop - color-coded (e.g., green=yes, red=no, gray=uncertain) entry of personal/family data, pertinent health and medication data, and relevant geo(zipcode), exposure, incident, contact data (see sample forms).



Screening procedure – verbal and paper or electronic data entry and completion-review



Roaming Triage Team (1+)

Special (Code "S") – Requires special assistance and/or security interview

I.2-(1√2√3)

Level 3 – Requires Medical Consult and Review

I.2-3

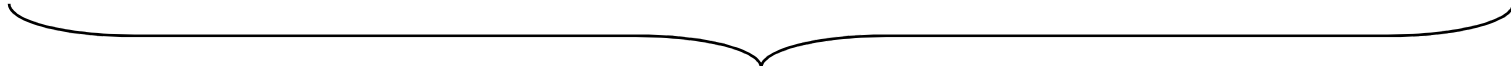
Level 2 – Requires Nursing/PA Consult and Review

I.2-2

Level 1 – Requires no special consult or review – proceed to dispensing node

I.2-1

Remark on Code "S" : (see I.1 slide)



Continue to appropriate detail-slide for next step in the process





II.1 Stage-1 screening-triage node for explicit (self-stated) asymptomatic and/or unexposed population

Similar to II.1 but with in-person and/or computer-based language assistance (preferably both). See detail-slide for CUBIT/CRAIDO multi-language assistance protocol.



Screening procedure – verbal and paper or electronic data entry and completion-review

Med/Sec Routing Determination



Roaming Triage Team (1+)

rare

rare

occasional

expected

Special (Code “S”) – Requires special assistance and/or security interview

Level 3 – Requires Medical Consult and Review

Level 2 – Requires Nursing/PA Consult and Review

Level 1 – Requires no special consult or review – proceed to dispensing node

I.2-(1√2√3)



I.2-3

I.2-2

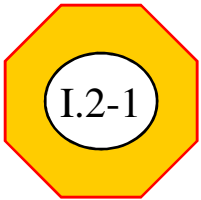
I.2-1

Remark on Code “S” : (see I.1 slide)

Continue to appropriate detail-slide for next step in the process

## Stage-2 Processes –

- Basic medical and informational dispensing
- Medical and/or security consultations
- Emergency processing for transit to hospital



I.2 Stage-2 (Level 1)  
No special problems – straightforward, provide meds and info dispensing, collect optional data, send people to exit

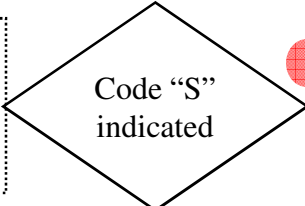


Optional data collection:  
Persons can provide on a paper form or on an electronic tablet, if they wish, additional information for use in future contact and GIS-enhanced epidemiological mapping and forecasting (e.g., place of residence, schools, employment, physical social-networking).

Medicine dispensation according to form handed to dispensing agent



Collection of form, inquiry about optional data collection, and direction to Discharge Area



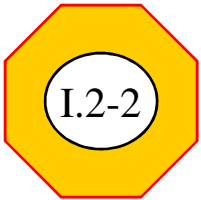
YES

NO

  
Security Interview

Person may choose to fill out optional data form or else skip this process

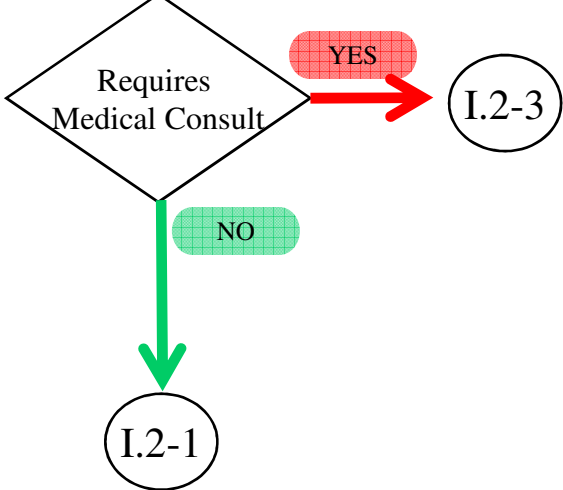
Discharge and EXIT

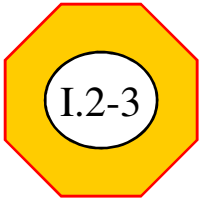


I.2 Stage-2 (Level 2)  
Potential medical issues re:  
condition or medication. Requires  
Nursing/PA Consult and Review.



Consultation with nurse or  
physician's assistant.





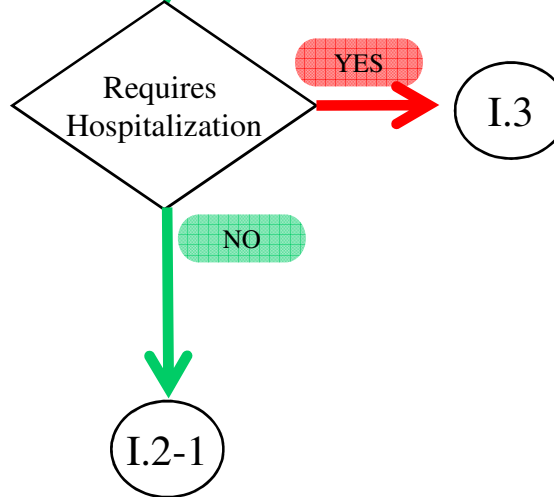
I.2 Stage-2 (Level 3)  
Definite or high-probability  
medical issues re: condition or  
medication. Requires Medical  
Consult and Review.



Additional data collection:

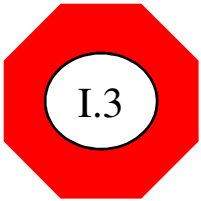
Medical consultant (physician or CBR medical specialist) will  
collect additional data as necessary and add to screening form or  
directly via tablet/laptop into database.

Consultation with Medical  
Consulting Staff



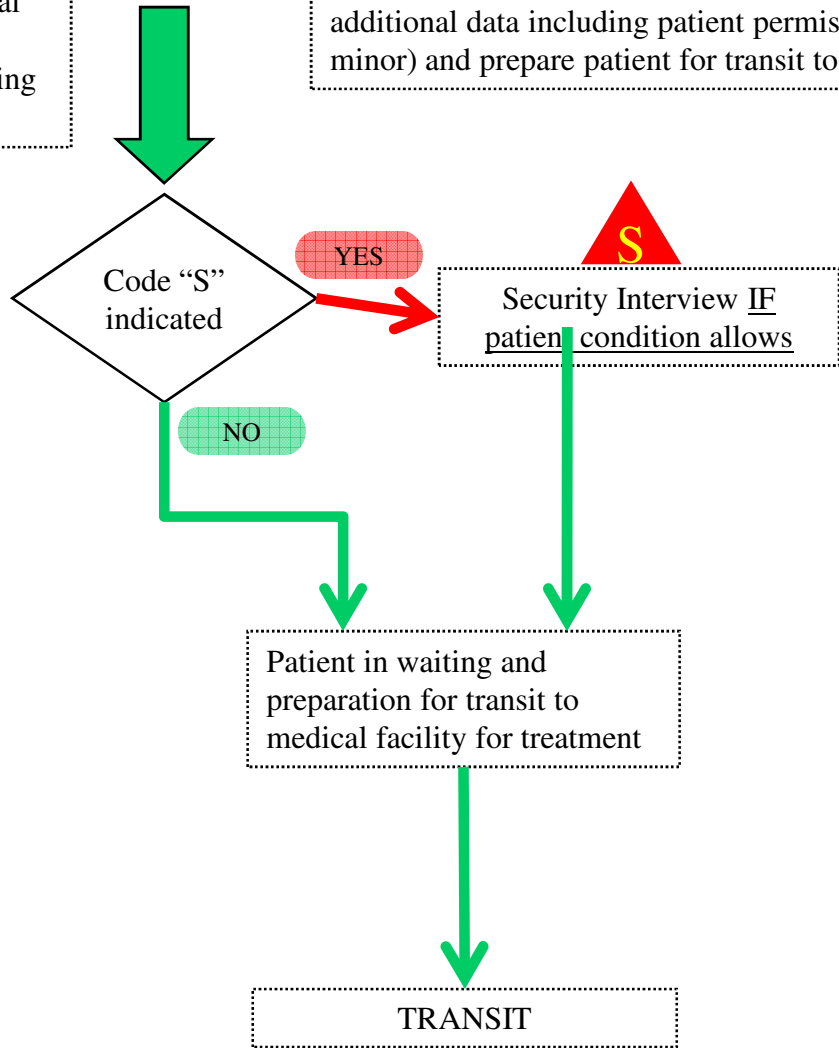
## Stage-3 Processes –

- Person deemed to require immediate medical attention at ER or equivalent facility
- Preparations, additional data collection, waiting, and transit to facility



I.3 Stage-3 Medical Consult results in decision for immediate treatment at emergency medical facility. Patient assigned to ambulance or shuttle-bus waiting area.

Additional data collection and procedures:  
EMT and/or Emergency-care transit staff-person will collect additional data including patient permission (or authorization for a minor) and prepare patient for transit to hospital or clinic.



For further information, contact:

Dr. Martin Dudziak, PhD

(202) 415-7295 or (804) 740-0342 or (505) 926-1399

[martinjd@tetradyn.com](mailto:martinjd@tetradyn.com)

[martin@instinnovstudy.org](mailto:martin@instinnovstudy.org)

[martin.dudziak@gmail.com](mailto:martin.dudziak@gmail.com)